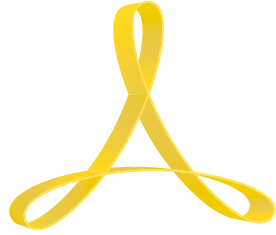


PASTA COOKER | ROBOTIC BASKET LIFT MODEL APCL28/35

TATIANA



ARCOBALENO™

Project: _____
 Item #: _____
 Qty: _____
 CSI Section 11400: _____
 Approval: _____
 Date: _____



STANDARD FEATURES

- Adjustable digital timers
- Linear basket lift actuators for accuracy and convenience
- Basket actuator push button up and down
- Locate adjacent to pasta cooker
- Factory and on-location training—the only full-service pasta machine manufacturer in North America

OPTIONAL FEATURES & ACCESSORIES

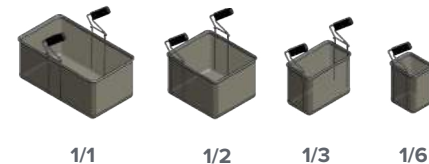
- Pasta lift baskets



APCL28
2 Lifters

APCL35
3 Lifters

Pasta Basket Options



Pasta Cooker with 2 basket lifters right & left side

■ WARRANTY

One Year: For more information visit arcobalenollc.com/warranty.html



■ TRY BEFORE YOU BUY

In an effort to ensure success, we maintain a test kitchen where you can have your very own recipe tested for quality —at NO COST to you! Call for details.



Specifications subject to change without notice due to policy of continuous product improvement.



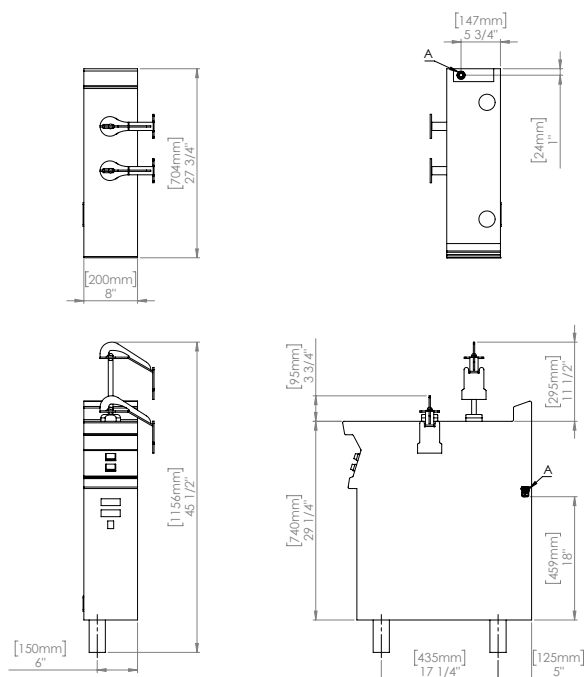
PASTA COOKER | ROBOTIC BASKET LIFT MODEL APCL28/35

ARCOBALENO™

TECHNICAL SPECIFICATIONS

Model	APCL28	APCL35
Power (Electric Only)	220/3/60Hz (2 Amps @ 208V)	220/3/60Hz (3 Amps @ 208V)
Machine Dimension	8"W x 27.75"D x 45.50"H	8"W x 35.25"D x 45.50"H
Shipping Dimension	10.50"W x 32"D x 50"H	11"W x 39"D x 50"H
Net Weight	145 lbs	160 lbs
Shipping Weight	160 lbs	175 lbs
Shipping Class	85	85

APCL28 NOTES:
A- ELECTRICAL CONNECTOR, 220V 3 PH 60Hz



APCL35 NOTES:
A- ELECTRICAL CONNECTOR, 220V 3 PH 60Hz

