

# PASTA COOKER | GAS

**RINA  
REGINA**



**ARCOBALENO®**  
PASTA EQUIPMENT

## APCG35H/35HA

HIGH BTU PASTA COOKER



**Intertek**  
CONFORMS TO UL STD 197; NSF/ANSI STANDARD 4  
CERTIFIED TO CSA STD C22.2 #109

### STANDARD FEATURES

- Versatile pasta cooker; cook fresh, dry & frozen pastas plus... noodles, vegetables and more
- Automatic water fill APCG35HA
- Automatically maintains water level
- Will not run water tank dry (no more burnt tanks)
- 80,000 BTU
- Powerful for frozen products
- Fast Recovery
- Innovative safety features
- Stainless steel construction - sanitary finish
- 11 gallons
- Large diameter starch skimmer and drain
- 3 position temperature control
- Equipped with gas and Plezoelectric ignition, pilot light and thermocouple safety valves
- Factory and on-location training. The Only Full-Service Pasta Machine Manufacturer in North America!



### OPTIONAL FEATURES & ACCESSORIES

- Robotic basket lift with adjustable digital timers (APCL)
- Casters Front 2 with locking brakes
- Casters Installed 2 front and 2 back
- Restraining Kit
- Variety of pasta basket options
- Custom door and panel colors



Please refer to [www.ralcolor.com](http://www.ralcolor.com) for custom color choices.



#### ■ WARRANTY

**One Year:** For more information visit [arcobalenollc.com/warranty.html](http://arcobalenollc.com/warranty.html)



#### ■ TRY BEFORE YOU BUY

In an effort to ensure success, we maintain a test kitchen where you can have your very own recipe tested for quality — at NO COST to you! Call for details.



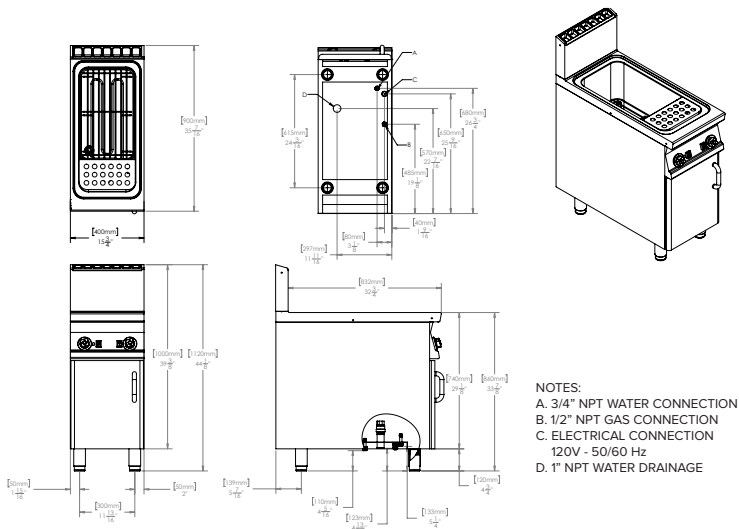
# PASTA COOKER | GAS



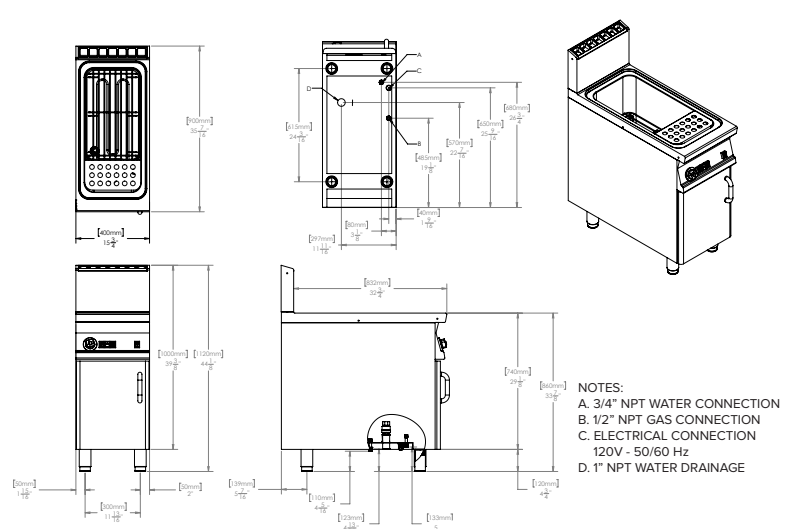
## APCG35H/35HA TECHNICAL SPECIFICATIONS

<b>Model</b>	APCG35H	APCG35HA
<b>Tank(s)</b>	1	1
<b>Tank Volume</b>	11 gallon	11 gallon
<b>Natural Gas/LP Connection</b>	1/2" NPTM	1/2" NPTM
<b>Natural Gas/LP Pressure</b>	7" WC max / 11" WC max	7" WC max / 11" WC max
<b>Total Gas Power</b>	80,000 BTU	80,000 BTU
<b>Total Electric Power</b>	120V 50/60Hz 0.015kW (0.24 Amps @ 120V)	120V 50/60Hz 0.018kW (0.29 Amps @ 120V)
<b>Water Connection</b>	3/4" NPTM	3/4" NPTM
<b>Water Draining</b>	1" NPTM	1" NPTM
<b>Tank Dimensions</b>	12.25"W x 20.25"D x 13"H	12.25"W x 20.25"D x 13"H
<b>Machine Dimensions</b>	15.75"W x 35.50"D x 45"H	15.75"W x 35.50"D x 45"H
<b>Shipping Dimensions</b>	17"W x 38"D x 50.25"H	17"W x 38"D x 50.25"H
<b>Machine Weight</b>	150 lbs	150 lbs
<b>Shipping Weight</b>	200 lbs	200 lbs
<b>Shipping Class</b>	85	85

### APCG35H



### APCG35HA



CAD file available. Please contact factory 717-394-1402. | Specifications subject to change without notice | © Copyright 2021 Arcobaleno®, LLC